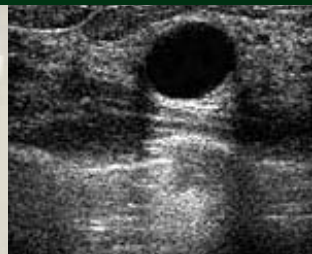


The Provincial Breast Health Strategy

Working together to improve breast cancer prevention, screening and diagnosis in BC

Provincial Breast Health Strategy Presentation



BC Cancer Agency Annual Cancer Conference 2011

Dec 1, 2011

Ms. Lynn Pelletier, Project Director, Provincial Breast Health Strategy

Dr. Christine Wilson, Medical Director, Screening Mammography Program of BC



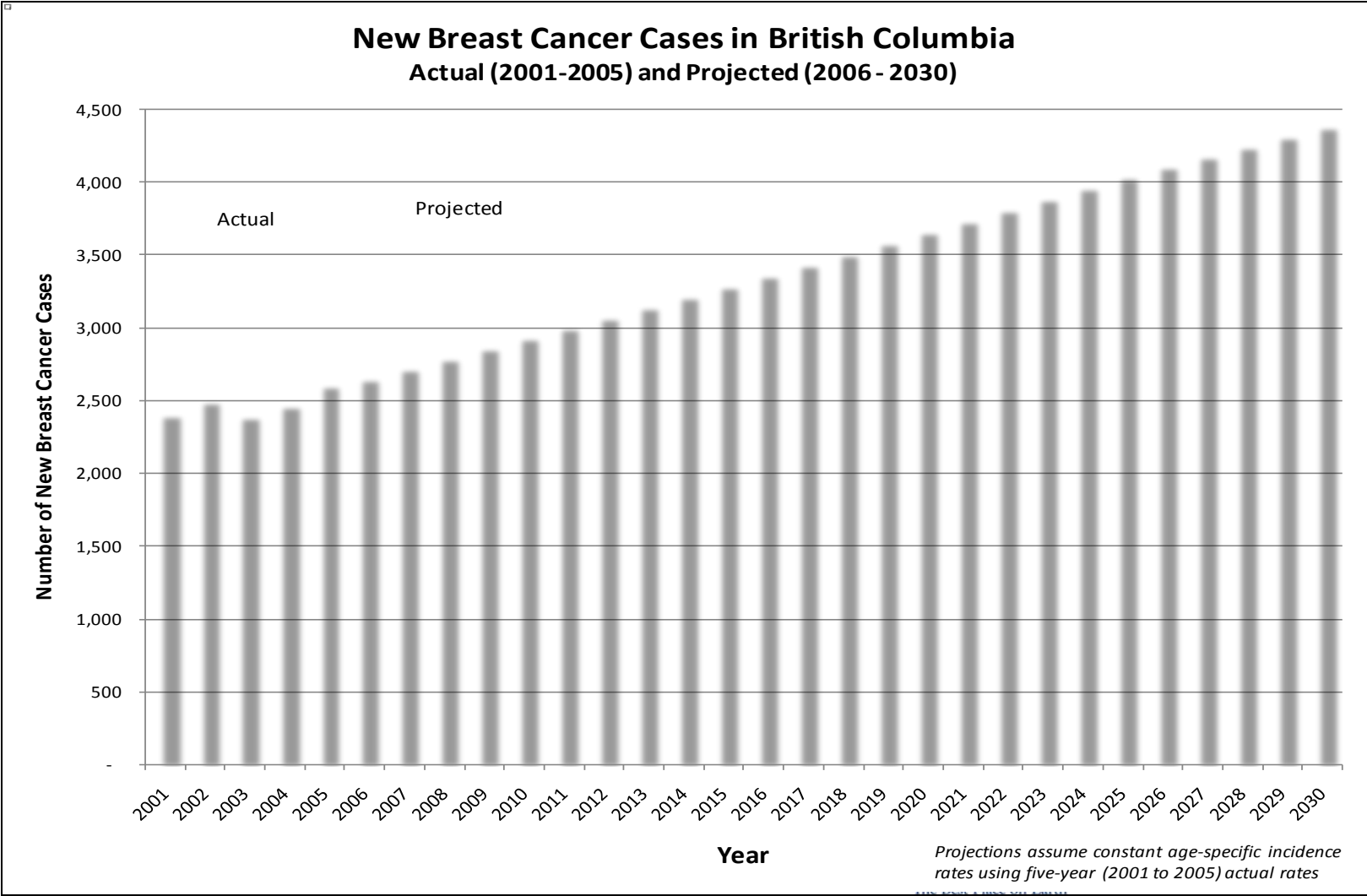
The Facts

Breast cancer is the most common cancer in women

- In 2011
 - 2,800 will be diagnosed with breast cancer in BC
 - Est. 600 will die from the disease
 - Numbers are expected to grow



Breast Cancer Cases in BC



The Challenge

- Aging population
- ↑ demands on the system
- Aging equipment/connectivity
- Confusion re: screening age, frequency, risks/benefits, etc.
- Unable to meet national performance targets
 - 54% vs 70% target for ♀ 50-69
- Frustration in the system due to delays from screening to diagnosis



Breast Health Action Plan

Requested by Ministry of Health

- Action Plan developed by PHSA (May 2010)
- Provincial Strategy initiated (June 2010)
- Co-chaired by BC Women's Hospital & BC Cancer Agency
- Project Lead: Lynn Pelletier

Partners

- Ministry of Health
- PHSA/Health Authorities
- Canadian Breast Cancer Foundation
- Canadian Cancer Society
- BC Radiological Society
- UBC, BCIT
- Others

Screening Mammography

- First in Canada (1988)
- Funded by Ministry of Health & coordinated by the BC Cancer Agency SMPBC
- Delivered by HAs & CICs
- Screen $\approx 300,000+$ ♀ age 40 – 79 each year
 - $\approx 7\%$ require diagnostic workup

Diagnostic Imaging

- Mammograms, ultrasounds, biopsies and other procedures
- Conduct diagnostic workup for women with abnormal screens and symptomatic women referred by GPs
- Funded by MSP
- Delivered by HAs & CICs



Performance Indicators (Ages 50 – 69)

Performance Indicator		Target	IHA Total	FHA Total	VCHA Total	VIHA Total	NHA Total	BC Total
Participation Rate		≥70%	53%	53%	55%	55%	50%	54%
Retention Rate	First Screen	≥ 75%	59%	53%	56%	58%	55%	56%
	Subsequent Screen	≥ 90%	81%	82%	83%	82%	78%	82%
Abnormal Call Rate	First Screen	< 10%	10%	15%	13%	9%	12%	12%
	Subsequent Screen	< 5%	5%	7%	6%	4%	6%	6%
Diagnostic Interval: Screen to Diagnosis	No Biopsy (≤5 weeks)	≥ 90%	70%	67%	73%	82%	69%	71%
	With Biopsy (≤7 weeks)	≥ 90%	63%	45%	55%	76%	42%	56%
Positive Predictive Value	First Screen	≥ 5%	6%	5%	6%	6%	7%	6%
	Subsequent Screen	≥ 6%	9%	6%	7%	10%	8%	8%
In-Situ Ca Rate	First Screen	Surveo	1.2	1.6	1.9	1.2	1.7	1.5
	Subsequent Screen		0.8	1.0	1.1	0.7	1.0	0.9
Invasive Ca Rate	First Screen	> 5.0	4.6	5.6	5.7	4.4	6.2	5.3
	Subsequent Screen	> 3.0	3.1	3.1	2.9	3.1	3.2	3.1
Sensitivity			88%	90%	90%	85%	89%	89%
Specificity			96%	92%	94%	96%	94%	94%
% Early Detected Cancer		> 60%	62%	62%	64%	64%	61%	63%

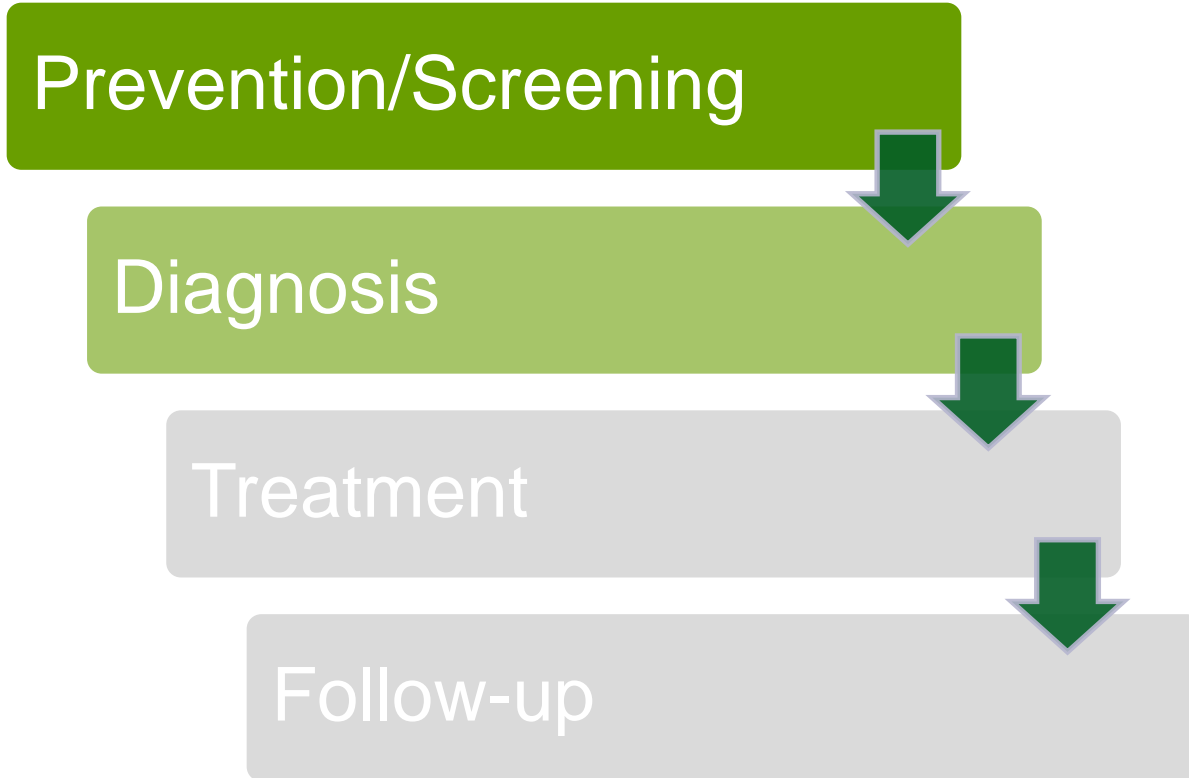
GOALS

Provincial Breast Health Strategy

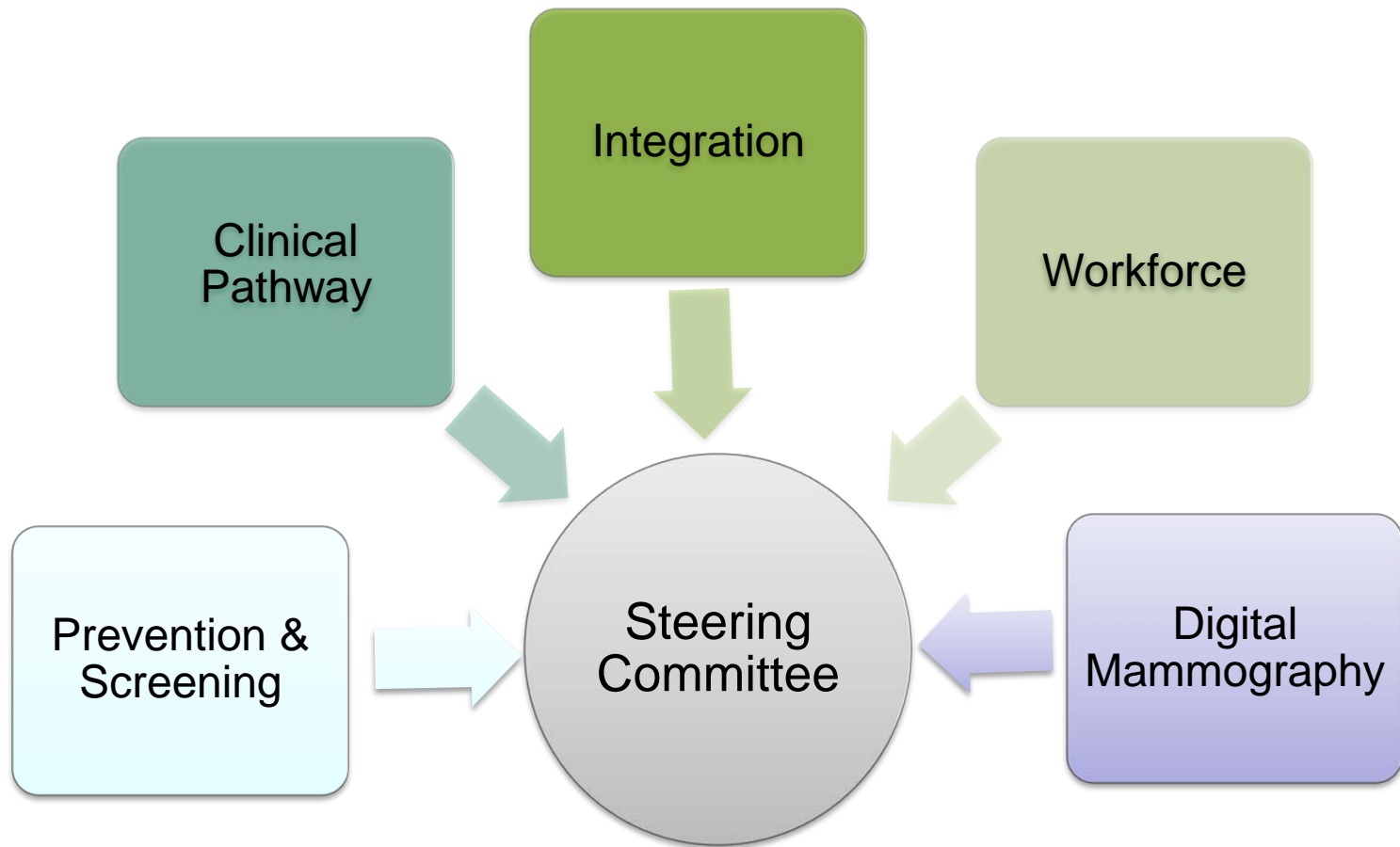
1. To ↑ prevention & early detection of breast cancer.
2. To improve the quality and consistency of the diagnostic clinical pathway.



Provincial Breast Health Strategy



Focus Areas



Primary Prevention

- Evidence Review
 - Dr. Hans Krueger (UBC)
- Burden Attributable to Known Modifiable Risk Factors
 - While 5-10% of breast cancers are attributable to genetic factors, an estimated 38-42% of breast cancers in developed countries are caused by exposure to obesity, physical inactivity, and/or alcoholic beverage consumption.



Primary Prevention

Collaboration

- Partner web-site/portal & social marketing campaign
“FIVE+ steps to breast health”
 - ✓ Physical activity
 - ✓ Health weight
 - ✓ Alcohol (1 drink or less/day)
 - ✓ Avoid HRT
 - ✓ Breast feeding
- Strategies to reach all women including “*hard to reach*”

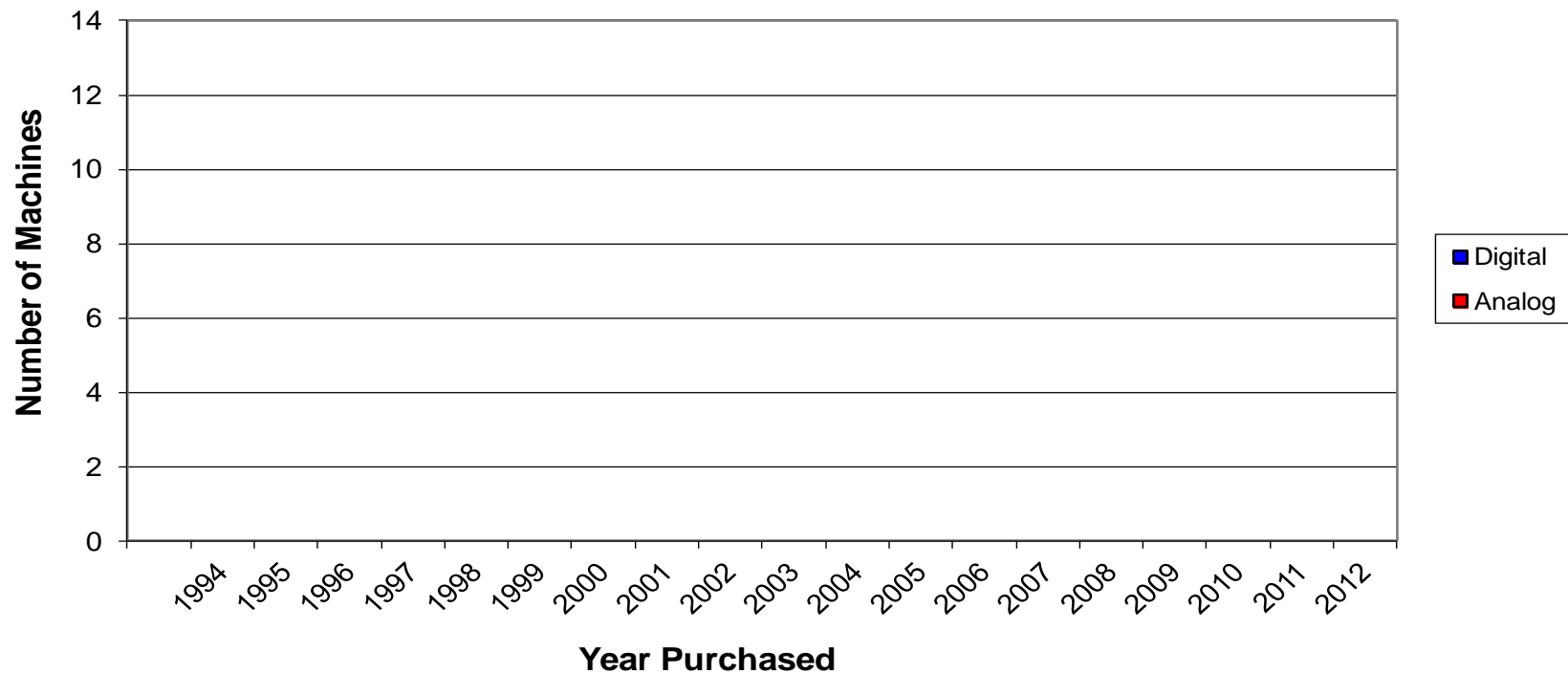


Screening

- Current Evidence
 - Screening ↓ mortality by 25%
- Current policy/practice
 - Screen ♀ 40-49 annually
 - Screen ♀ 50-79 biennially
- Screening Review underway
 - BC Evidence Review – Sept/11
 - Canadian Task Force on Preventative Health Care - Nov/11
- Once policy is confirmed:
 - Communication/ ↑ GP engagement
 - Link to Decision Aids (PHAC)

Mammography in BC

Age of Equipment





Digital Mammography

- Provincial inventory developed
- RFP issued
- Digital Mammography Business Case developed
- Next Steps
 - Secure funding
 - Develop a provincial replacement plan
 - Work with Health Authorities to implement & ensure IT connectivity

Workforce

- Cross-training
 - Mammography/US
- Radiology fellowships
- Clarified navigation requirements in screening & diagnosis
- Examined radiologist fees for image guided core biopsies
 - HSPO funding to hospital hubs to ↑ image guided biopsies

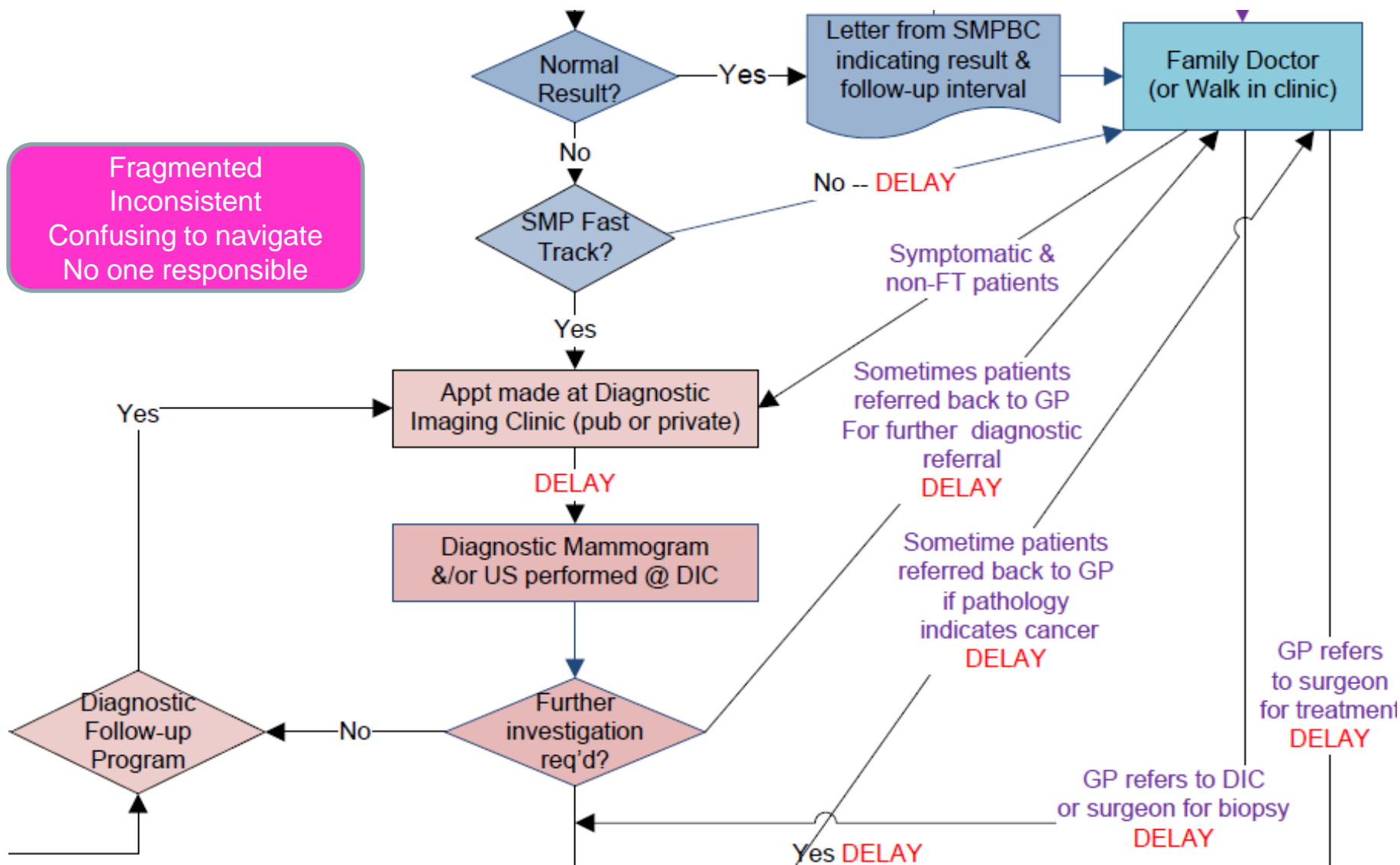


Clinical Pathway



- Convened a multi-disciplinary team of clinical & administrative professionals
- Consulted with stakeholders at 2010 Breast Health Summit
- Mapped the current state
- Developed a recommended provincial diagnostic pathway & hub/spoke model

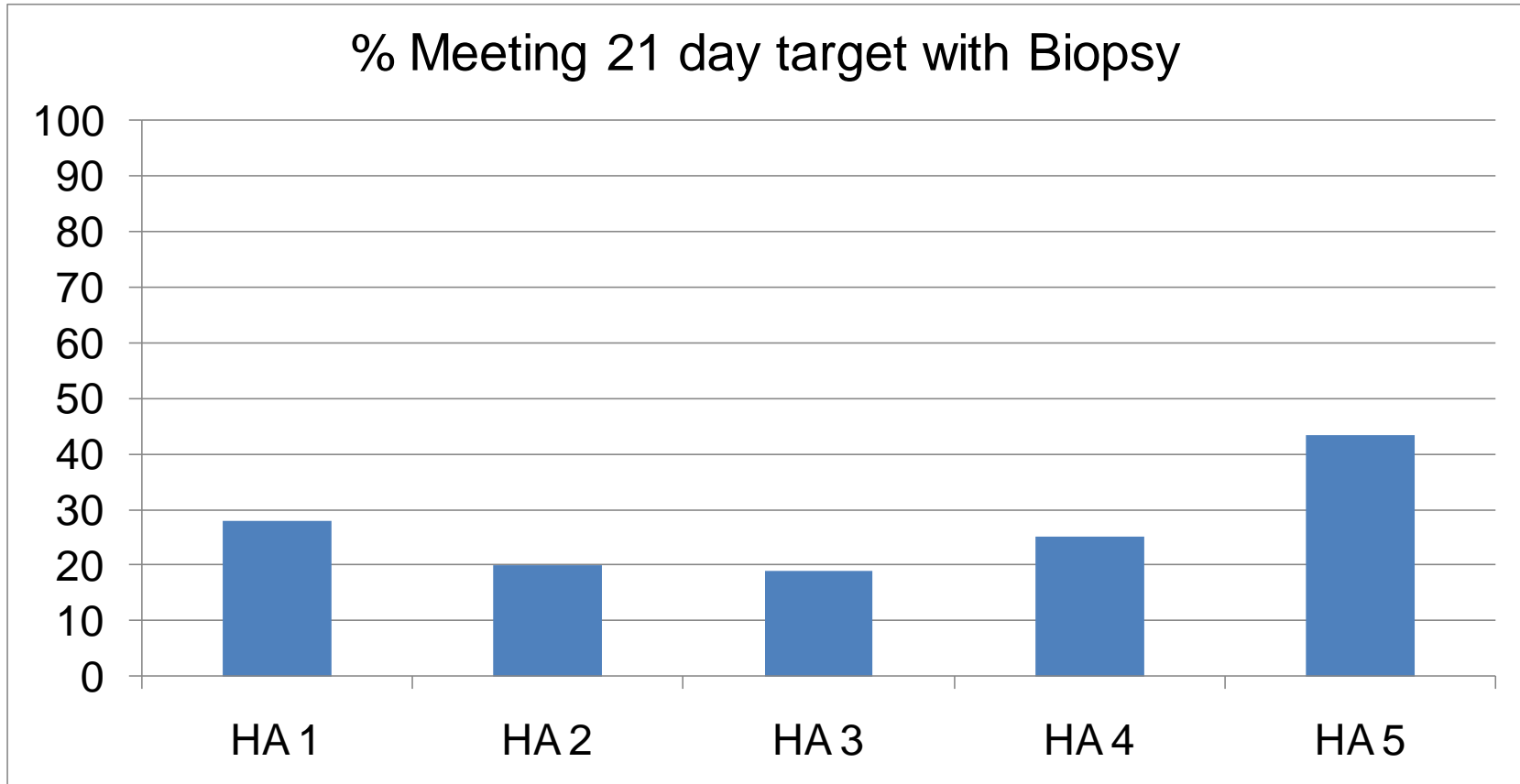
Current Pathway



Pathway?

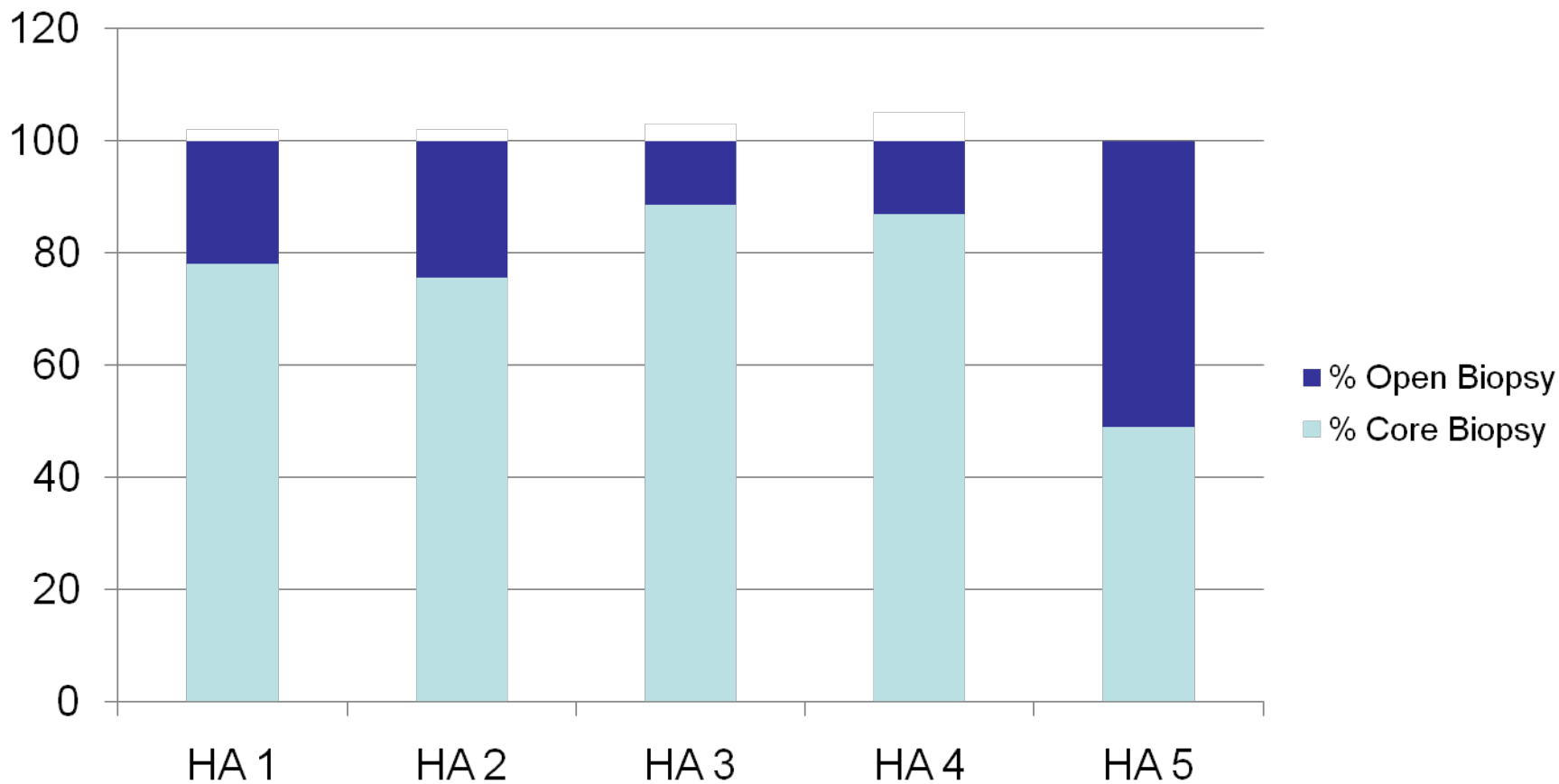


Diagnostic Delay



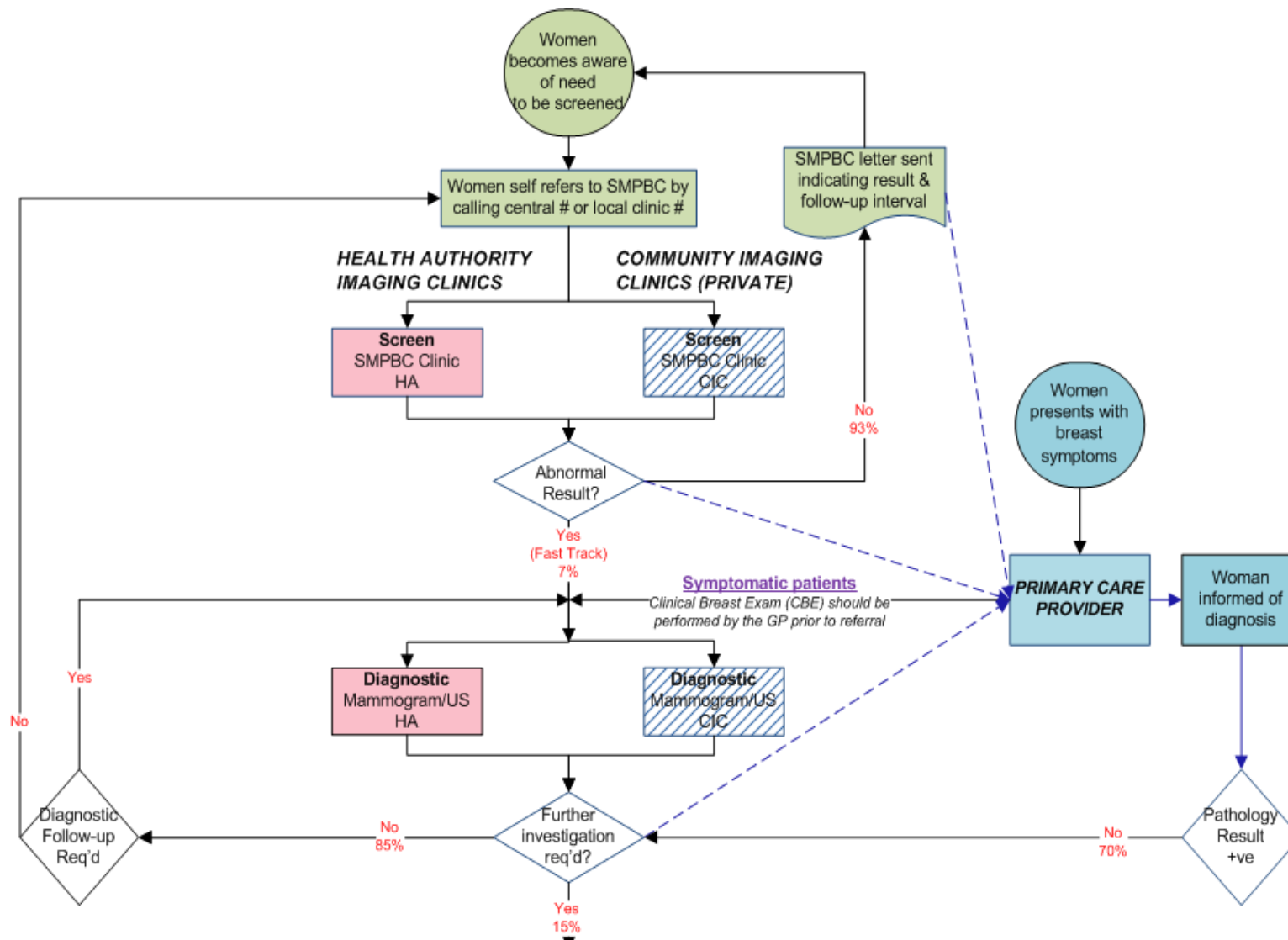
Standard of Care

Open vs. Core Biopsies



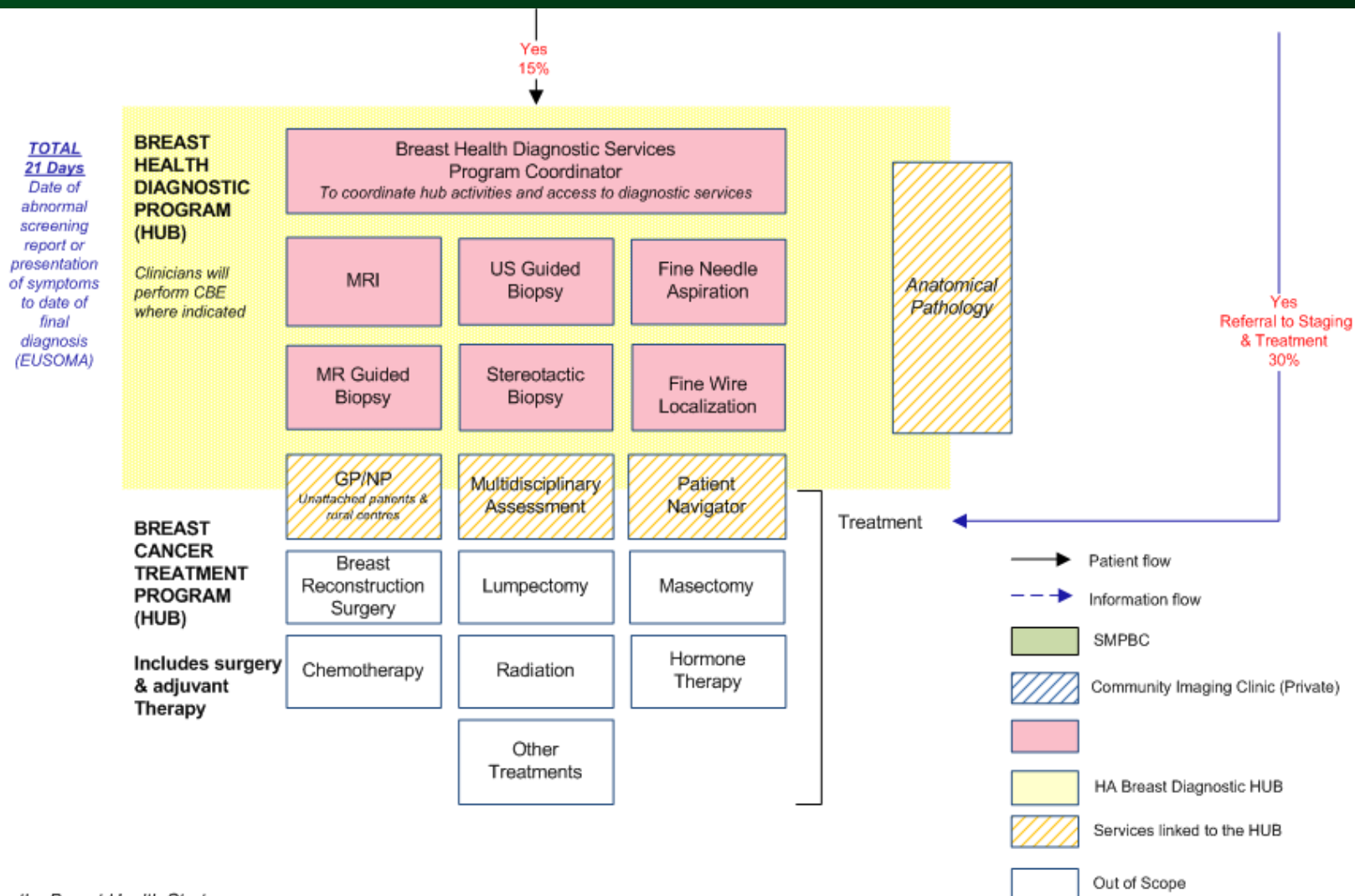
Recommended Provincial Pathway

Screening → Diagnosis

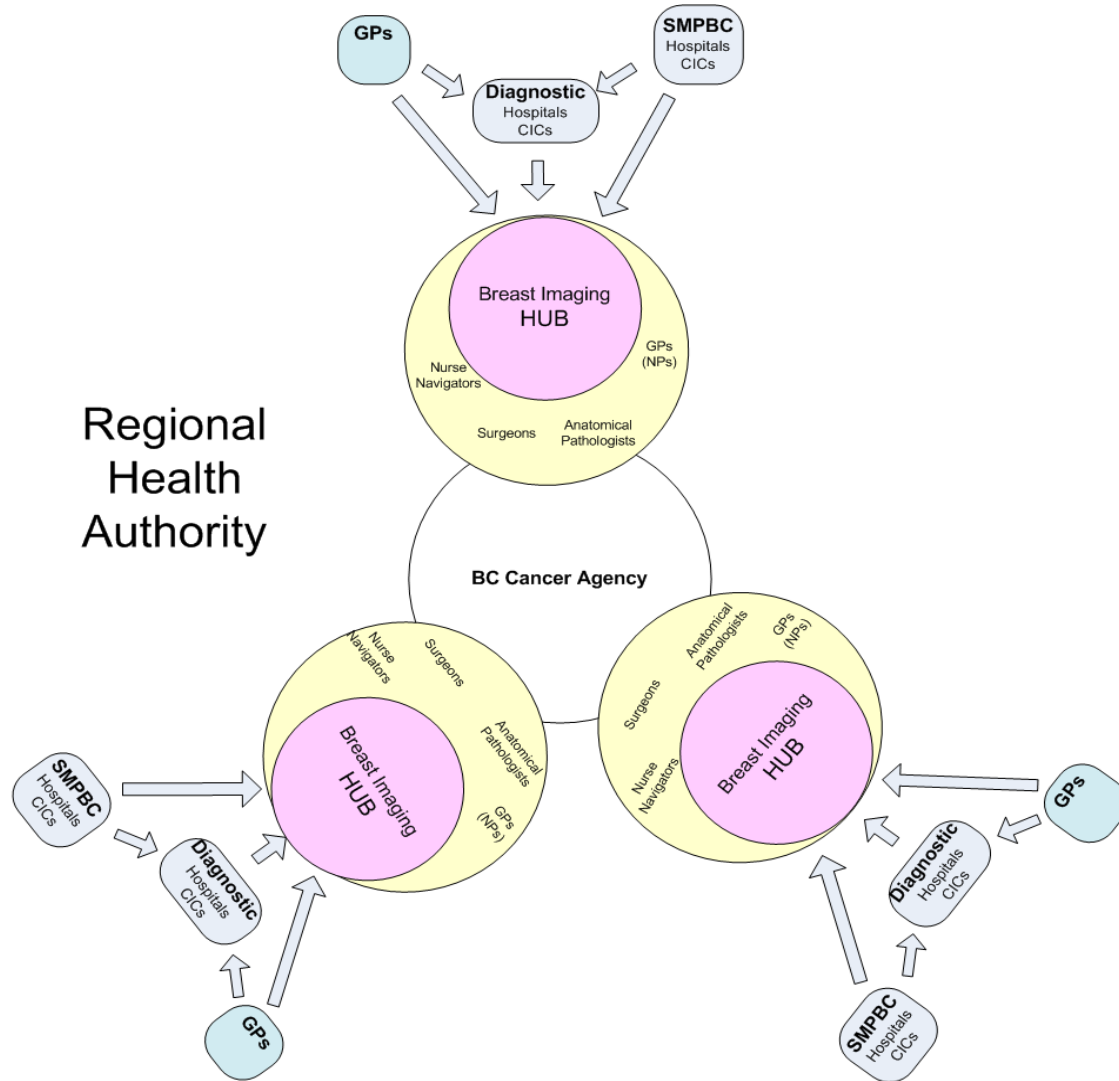


Recommended Provincial Pathway

Screening → Diagnosis



Hub and Spoke



Future Pathway: A Highway

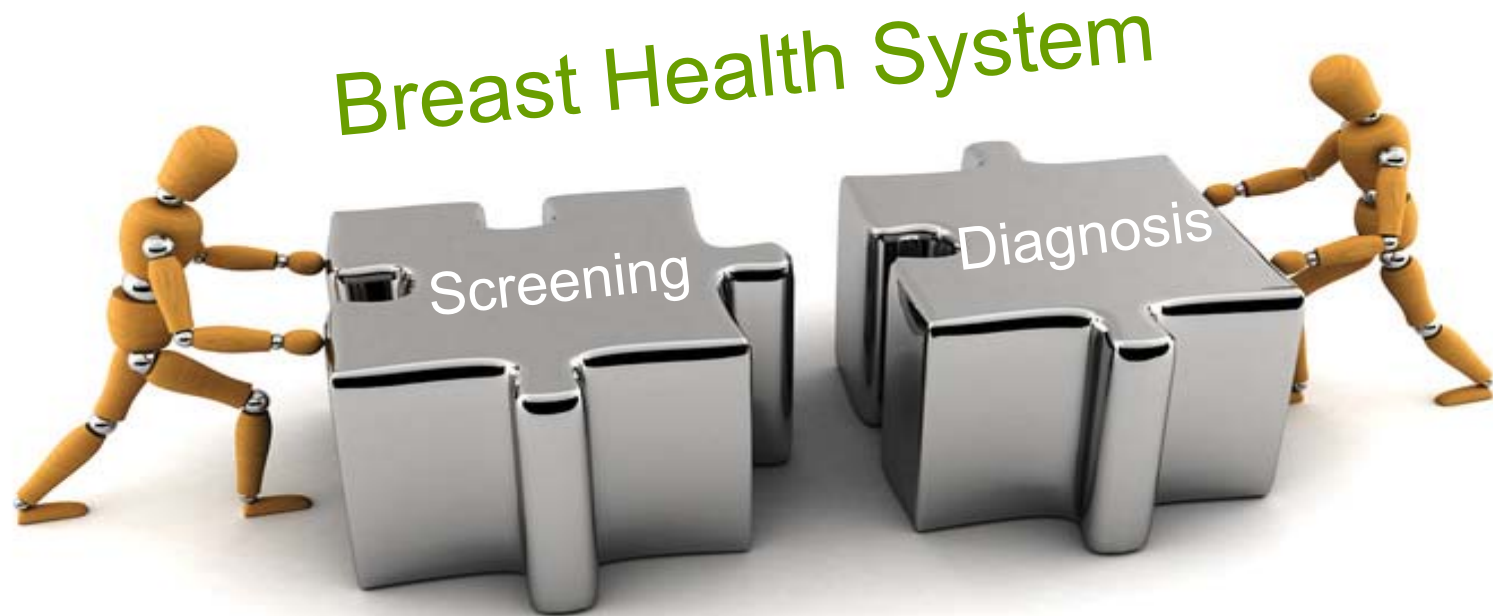
21 days to
diagnosis

Roadmap

Support and
Information
here



Integration



Next Steps

- Update the screening policy & practice
- Communicate widely
 - Web-site/portal & social marketing campaign
- Incorporate evidence-based primary prevention messages
- Strengthen links with GPs



Next Steps

- Implement clinical pathway & hub/spoke model
- Update clinical guidelines/protocols
- Upgrade equipment & connectivity to integrate screening & diagnostic services
- ↑ image guided biopsies in hospital hubs
- Implement cross-training



How do we know if we have made a difference?

Coverage

- Participation rate

Follow-Up

- Diagnostic Interval
- Abnormal Call Rate

Quality

- Positive Predictive Value
- Sensitivity and Specificity

Detection

- In Situ Breast Cancer Detection Rate
- Invasive Breast Cancer Detection Rate

Disease Extent at Diagnosis

- Early Stage Invasive Breast Cancer Detection Rate
- Locally advanced breast cancer Rate

Questions

<http://www.phsa.ca/HealthProfessionals/pbhs/default.html>

